

# ZigBee Gateway

Wireless Zigbee gateway has a built-in highly integrated Wi-Fi module and a low-power wireless Zigbee module.

On TUYA Smart Life APP, users can realize functions such as device adding, reset, third-party control and Zigbee group control, and match with a variety of Zigbee 1-5 color constant voltage LED controller, Zigbee triac dimmer, Zigbee 0/1-10V dimmer and Zigbee dimming LED driver to meet smart home applications.



CE RoHS  LVD RED

## Features

- Plug and play, easy to use.
- Integrated with WiFi and Zigbee communication mode, achieve remote WiFi control and local Zigbee control.
- WiFi signal and Zigbee signal are stable and reliable, can cover a wide area, preventing interference, and feature lower power consumption.
- To strengthen security, the device adopts industry-advanced encryption to transmit information on both WiFi and Zigbee terminal.
- The same local area network can connect multiple Zigbee gateway via Smart Life APP.
- long press reset key for 5s to clear previous connection, enter configure mode rapidly.

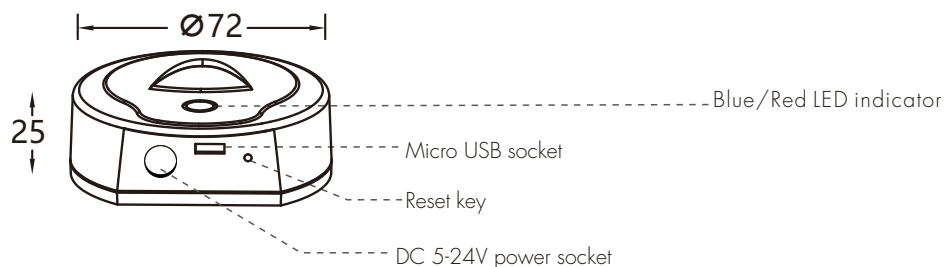
## Technical parameters

1. Physical characteristics		2. RF characteristics		
Specification	Details	Specification	WiFi	Zigbee
State indicator	Two LED (WiFi+Zigbee)	Wireless frequency	2.400 ~2.4835GHz	2.400-2.480 GHz
Operation key	One key (for resetting)	Transmitting power	21 dBm	10dBm(Standard)
Input voltage	MicroUSB DC5V	Signal channels	CH1-CH11	CH1-CH26
Input current	<1A	Transmitting rate	11b:1,2,5,5, 11 (Mbps) 11g:6,9,12,18,24,36, 48,54(Mbps) 11n:HT20 MCS0~7 11n:HT40 MCS0~7	250Kbps
Operation temperature	-10-55°C			
Operation humidity	10%-90%RH(noncondensable)	<b>3. Network performance</b>		
Storage temperature	-20-60°C	Specification	Details	
Storage humidity	5%-90%RH(noncondensable)		Wireless encryption	AES 128bit Encryption
Hardware port	One Micro-USB	Network administration		WPA-PSK/WPA2-PSK, WPA/WPA2 Security mechanism
Wireless technology	WiFi 802.11 b/g/n Zigbee 802.15.4		APP remote configuration	
Type of antennae	Built in on-board antenna	WiFi module firmware upgrade		
		Zigbee module firmware upgrade		
		The number of connecting sub-devices	Max Node=50	

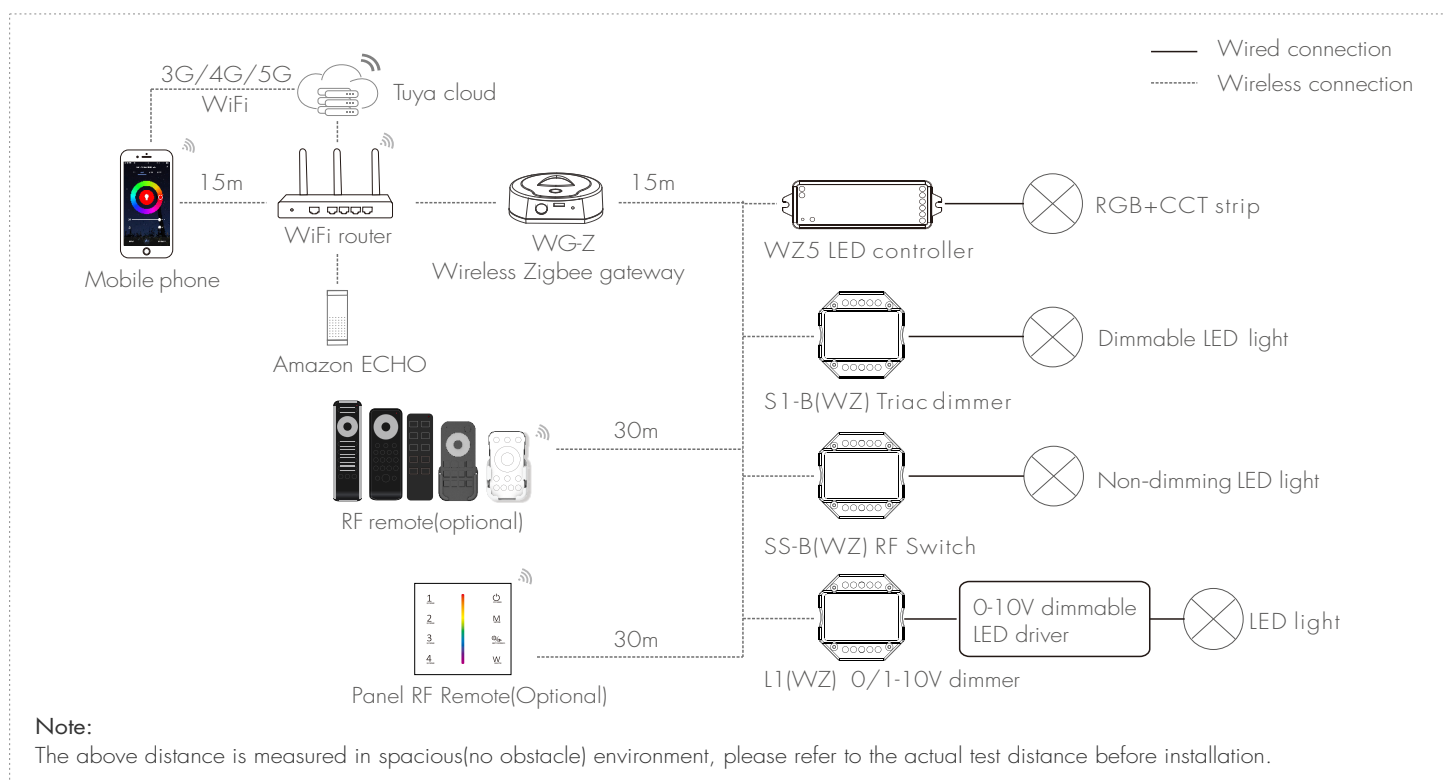
### 4. State indicator & reset

- **Blue light indicates Zigbee state**
  - \* Blinking means that gateway is waiting for connect and allowed to access the network
  - \* Indicator keeps on means gateway is no activated
  - \* Indicator keeps off means gateway has been activated
- **Red light indicates WiFi state**
  - \* Indicator keeps on means gateway has been connected
  - \* Blinking means that gateway is waiting for connect
  - \* Indicator keeps off means gateway has configure WiFi, but is unable to connect WiFi.
- **Method for resetting:** After long press reset key for 5s, then red LED indicator flashes quickly.

## Mechanical structure and installation



## System Wiring



## Preparation for usage

Download and open APP

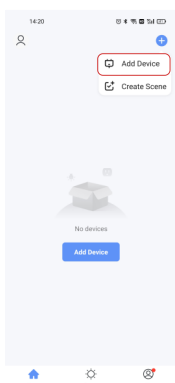
In the App store or Google play, search for "Smart Life " or scan the QR code on the manual to download and then install the smart APP.



## Operation

### Tuya APP cloud control

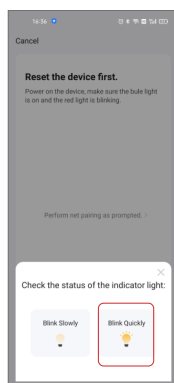
1. Power on the gateway.
2. Make sure that the gateway's red LED indicator is blinking (If the indicator is in other status, long press reset key until indicator flash).
3. Open the WiFi, at this time, mobile phone and gateway are in the same local area network.
4. Open Smart Life app, tap "+" in the upper right corner, add Zigbee gateway manually (select for "Gateway Control", then tap "Wireless Gateway(Zigbee)", see the graph below).
5. After add gateway successfully, tap "Gateway" icon on home page, then add sub-devices according to prompts in the APP.



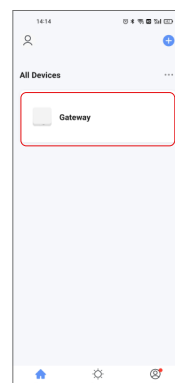
Click "+", prepare for adding devices



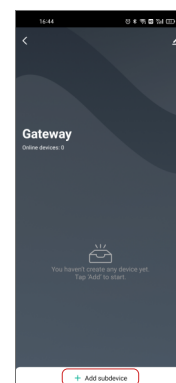
Select for "Gateway control" tap on "Wireless Gateway(Zigbee)"



Opt for "Blink quickly"



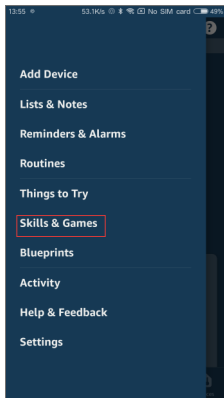
Click "Gateway" icon on home page, enter operation interface of Gateway



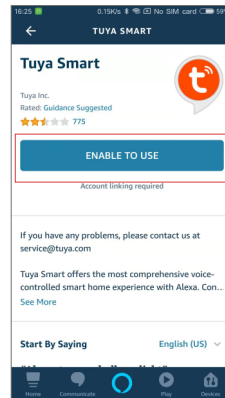
Add sub-devices

## Voice control(Amazon ECHO)

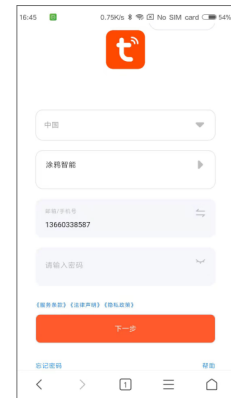
1. Power on the gateway.
2. Open the WiFi, bluetooth and location of your phone.
3. Make sure that the gateway's red LED indicator is blinking (If the indicator is in other status, long press reset key until indicator flash).
4. Open Smart Life APP, tap "+" in the upper right corner, add Zigbee gateway manually (select for "Gateway Control", then click Wireless Gateway (Zigbee)").
5. After add gateway successfully, click "Gateway" on home page, then add other sub-devices according to prompts.
6. Make sure Amazon ECHO is powered on.
7. Connect Amazon ECHO to Internet via Amazon Alexa APP.
8. Tap "Skills&Games" in the Alexa app menu.
9. Then search for "Smart Life" or "Tuya Smart", tap "Enable" to enable the Skill.
10. Enter the Smart Life App account and password, then tap "Link Now" to link your Smart Life account to enable the Skill.
11. After link Smart Life account successful, you can control sub-devices connected with our gateway via voice commands.



Tap "Skills&Games"



Tap "Enable" to enable the Skill



Enter the Smart Life App account and password

## Notice for applications

1. If gateway cannot connect with WiFi, check if your phone is connected to WiFi and whether open bluetooth and location of your phone; If there is no problem in your mobile phone, please long press reset key for 5s, until indicator flash rapidly for several times.
2. When the gateway is be used, it must be connected into socket all the time.
3. In order to have stable connection, we recommend that install gateway in the central area of all sub-devices and stay 2-6 meters away from WiFi router; the distance between gateway and sub-devices are no more than 20 meters and there be no more than two walls between them.
4. Try to avoid mental blocks and load-bearing walls between gateway and router, gateway and sub-devices; If there are thicker solid walls or high-power electrical appliances (for instance, refrigerator, air conditioner, electric heater and so on)between gateway and sub-devices, the communication distance will decreases to only 3-5 meters.
5. The phone must connect with WiFi firstly, then connect sub-devices to gateway by Tuya APP.
6. The maximum number of sub-devices connecting with the same gateway is 50.